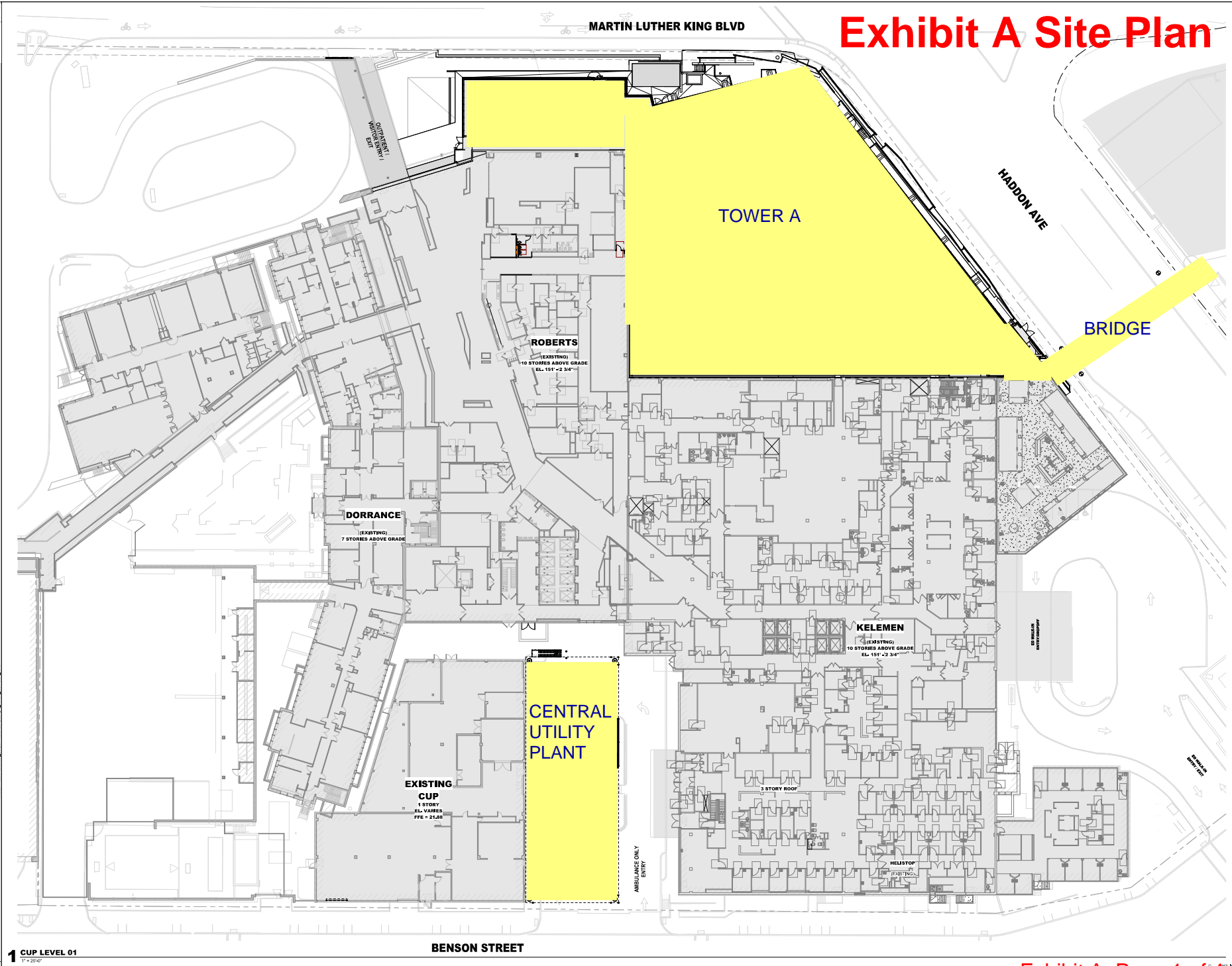


Exhibit A Site Plan



RESERVE FOR COCA STAMP

INTERIM REVIEW ONLY
 These documents are not for construction and are not intended for regulatory approval. Please do not construct based on these documents.
 Architect: LESLIE HANSON
 AutoCAD: J. J. HANSON
 Date: 10/31/2024

HKS

ARCHITECT
 1201 E. RIVER STREET, SUITE 600
 WASHINGTON, DC 20002

STRUCTURAL ENGINEER
 COONELL & WILCOX
 701 MARKET ST. #600
 PHILADELPHIA, PA 19106

MEP/FP / LOW VOLTAGE ENGINEER
 BRUNNENBERG ENGINEERS
 381 WALNUT ST. SUITE 705
 PHILADELPHIA, PA 19102

HIGHLAND ASSOCIATES
 102 HIGHLAND AVE
 CLARKSBURG, PA 15811

Cooper University Health Care
COOPER UNIVERSITY HOSPITAL - CUP EXT

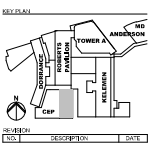
PROJECT ADDRESS: COOPER UNIVERSITY HEALTH CARE

OWNER
 COOPER UNIVERSITY HEALTH CARE
 1 COOPER PLAZA
 CAMDEN, NJ 08102

PROJECT MANAGER
 HANSEN
 2710 S. GARDNER STREET, SUITE 400
 ARLINGTON, VA 22206

CIVIL ENGINEER
 LANGRISH
 1716 MARKET STREET, SUITE 3000
 PHILADELPHIA, PA 19103

SEAL & SIGNATURE



HKS PROJECT NUMBER:
25695.104

DATE:
10/31/2024

SCALE:
SCHEMATIC DESIGN

SHEET TITLE:
ARCHITECTURAL STREET LEVEL

SHEET NO.
1111

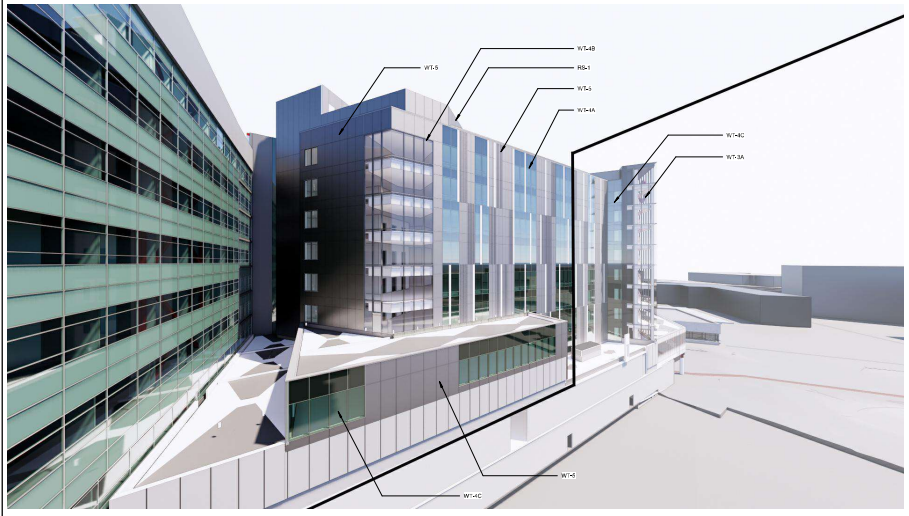
1 CUP LEVEL 01
 11/20/24

BENSON STREET

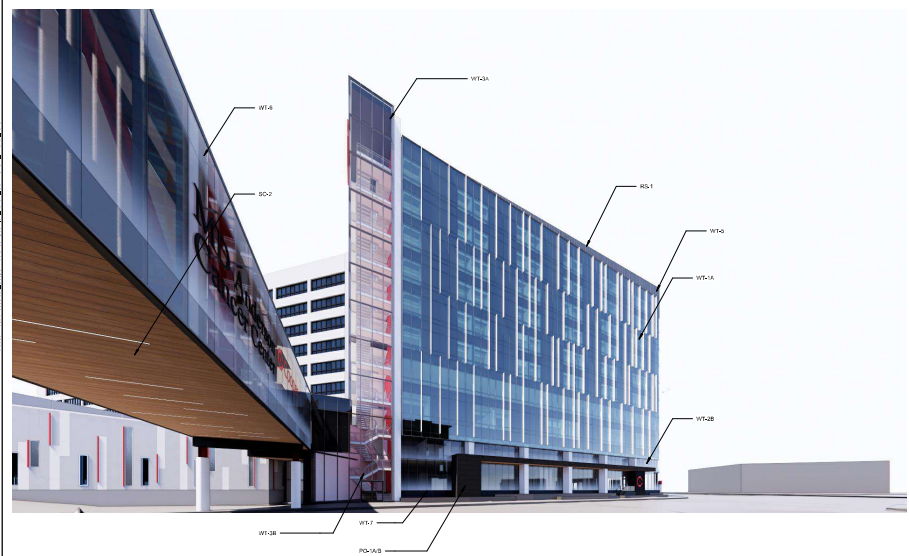
WALL TYPE SCHEDULE					
WT-1A	SSG UNFINED CURTAIN WALL WITH SHADING RING SOUTH TOWER AMF-01, GL-01, GL-15	WT-3A	SSG UNFINED CURTAIN WALL WITH SHADING RING SE SIDE AMF-01, GL-01	WT-5	METAL PANEL HANDGRIPS ON STEEBUILT BACKUP WALL WEST ANCHOR TOWER AMF-01, AMF-02
WT-1B	SSG UNFINED CURTAIN WALL WITH SHADING RING AND EXTENSION AT ROOF NORTH TOWER AMF-01, GL-01, GL-15	WT-3B	SSG S-ROCKWELL CURTAIN WALL WITH SHADING RING SE SIDE POOL AMF-01, GL-01	WT-6	SSG UNFINED CURTAIN WALL SOUTH TOWER AMF-01, GL-01, GL-15
WT-1C	SSG UNFINED CURTAIN WALL WITH GLAZED-IN METAL PANEL SOUTH TOWER AMF-01	WT-4A	SSG UNFINED CURTAIN WALL WITH GLAZED-IN METAL PANEL ACCENTS WEST SIDE SOUTH TOWER AMF-01, AMF-02, GL-01, GL-15, GL-18P	WT-7	DRIVE MAINTENANCE AIRSPACE OVER GENERAL WALK NORTH AND EAST POOL AMF-01
WT-2A	SSG UNFINED CURTAIN WALL NORTH AND EAST SIDE TOWER AMF-01, GL-01, GL-02, GL-15	WT-4B	SSG UNFINED CURTAIN WALL SOUTH TOWER AMF-01, GL-01	WT-8	METAL PANEL HANDGRIPS ON CONTRIBUTED BOLLARD IN CIVIC FORMED METAL PANEL BACKUP WALL ROOF LEVEL, AMF-01
WT-2B	SSG STEEBUILT CURTAIN WALL WEST AND EAST SIDE DRIVERS POOL AMF-01, GL-01, GL-02, GL-15	WT-4C	SSG UNFINED CURTAIN WALL SOUTH TOWER AMF-01, GL-01, GL-15	PO-1A	NATURAL STONE WITH ANCHOR ON STEEL STRUCTURE STORY
PO-1B	DRAINED AND BACK VENTED METAL PANEL ON STEEL STRUCTURE NORTH AND EAST POOL		PO-1C	HEAVY-PRESSURE LAUNDRY PANSCREEN OVER STEEL STRUCTURE NORTH AND EAST POOL HT-01	

RESERVE FOR OCA STAMP

Exhibit A Tower A Perspectives



02 NORTHWEST PERSPECTIVE
NTS



03 SOUTHEAST PERSPECTIVE
NTS



01 NORTHEAST PERSPECTIVE
NTS

HKS
ARRAY
 ARCHITECT
 HKS P.C.
 1201 BETHLEHEM BLVD. SUITE 400
 WASHINGTON, DC 20004
 ASSOCIATE ARCHITECT /
 INTERIOR DESIGNER
 ARRAY
 1101 MARKET STREET, SUITE 500
 COVINGTON, LA 70428
 STRUCTURAL & MECHANICAL
 TOL MARKET ST. #6000
 P.O. BOX 164, PA 19101
MEL-PF LOW VOLTAGE
ENGINEER
 BR-A CONSULTING ENGINEERS
 2801 MARKET STREET, 110
 PHILADELPHIA, PA 19103
 MECHANICAL ASSOCIATES
 100 HIGHLAND AVE.
 CLARKS SUMMIT, PA 18811

Cooper
 University Health Care
COOPER UNIVERSITY
HOSPITAL - TOWER A
 PROJECT ADDRESS: 1 COOPER UNIVERSITY BLVD
 OWNER
 COOPER UNIVERSITY HEALTHCARE
 1 COOPER PLAZA
 CAMDEN, NJ 08102
 PROJECT MANAGER
 HANSEN
 2701 S. GLENY STREET, SUITE 500
 ARLINGTON, VA 22206
 CIVIL ENGINEER / LANDSCAPE
 LANGRISH
 1700 MARKET STREET, SUITE 1300
 PHILADELPHIA, PA 19103
 SEAL & SIGNATURE

Digitally signed by
 L. Hanson
 Date: 2024.10.15
 14:11:29-0400'

REVISION	NO.	DESCRIPTION	DATE

HKS PROJECT NUMBER
25695.100
 DATE
08/15/2024
 ISSUE
CORE & SHELL PERMIT
SET
 PROJECT TITLE
ARCHITECTURAL
RENDERINGS

SHEET NO.
A5.00

FACADE MATERIAL LEGEND

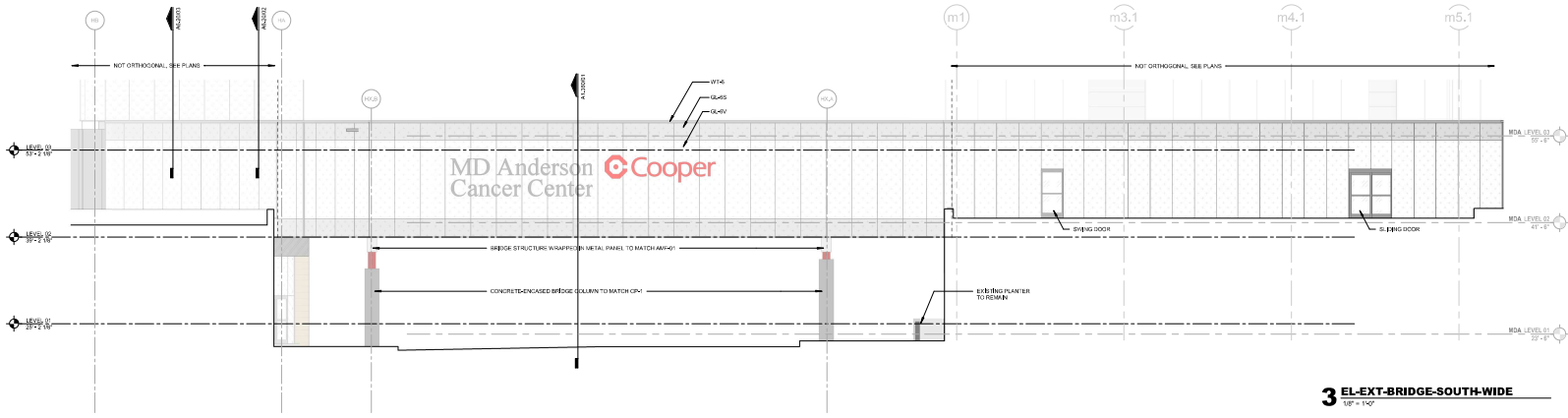
CURTAIN WALL GLAZING - VERTICAL MUNTINS - GL-10	CURTAIN WALL GLAZING - LOW IRON IRON-CLAD	CURTAIN WALL GLAZING - LOW IRON SPANDREL BARS	CURTAIN WALL GLAZING - LOW IRON SPANDREL BARS IN CUSTOM FIT GLASS	CURTAIN WALL GLAZING - LOW IRON SPANDREL BARS IN CUSTOM FIT GLASS - METAL PANEL	METAL PANEL MUNTIN	METAL PANEL MUNTIN	METAL PANEL MUNTIN	SMOOTH METAL PANEL	NATURAL STONE VENEER
CURTAIN WALL GLAZING - SPANDREL GL-10	CURTAIN WALL GLAZING - LOW IRON IRON-CLAD EMBOSSED GLASS	CURTAIN WALL GLAZING - LOW IRON SPANDREL BARS IN EMBOSSED GLASS	CURTAIN WALL GLAZING - LOW IRON SPANDREL BARS IN EMBOSSED GLASS - CUSTOM FIT GLASS	METAL PANEL GLAZED IN METAL PANEL GL-HRP-AMF-01	METAL PANEL AMF-01	METAL PANEL AMF-01	SMOOTH METAL PANEL	NATURAL STONE VENEER (S-01)	

GENERAL NOTES

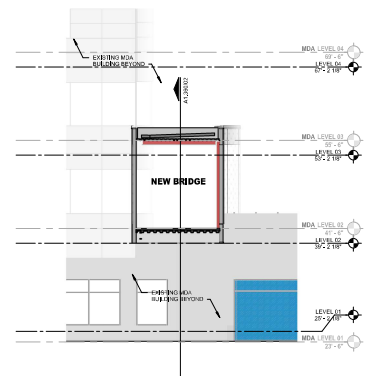
1. REFER TO ARCHITECT'S SYSTEM PLAN FOR DETAILED EXTERIOR FINISH SECTIONS.
2. SEE NOTES ON ELEVATIONS FOR LOUVER LOCATIONS.
3. SEE NOTES ON ELEVATIONS AND DETAILS FOR WINDOW COORDINATING AND TYPICAL WINDOW INSULATION TO MATCH COORDINATING UNIT.
4. PROVIDE BRIDGE SUPPORT THROUGH EXISTING WALL FOOTING.

RESERVE FOR OCCASION

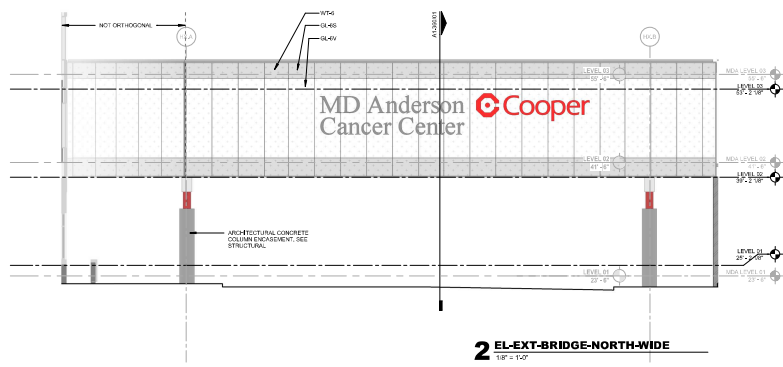
Exhibit A Bridge Elevations



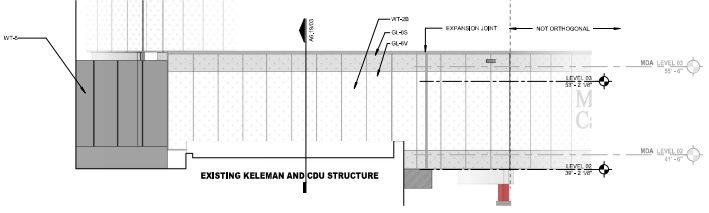
3 EL-EXT-BRIDGE-SOUTH-WIDE
1/8" = 1'-0"



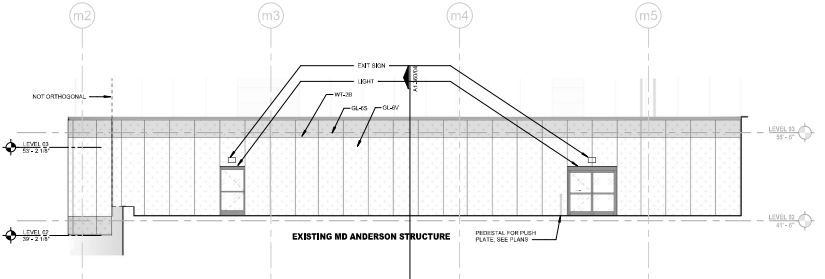
05 ELEVATION - BRIDGE AT WEST MD ANDERSON
1/8" = 1'-0"



2 EL-EXT-BRIDGE-NORTH-WIDE
1/8" = 1'-0"



04 ELEVATION - BRIDGE - SOUTHWEST
1/8" = 1'-0"



1 EX-EXT-BRIDGE-NORTH-MDA
1/8" = 1'-0"

HKS
ARRAY
ARCHITECTS

ARCHITECT
HKS P.C.
2025 RIVERSIDE STREET, SUITE 400
WASHINGTON, DC 20005
ASSOCIATE ARCHITECT /
INTERIOR DESIGNER
ARRAY
1102 RIVERSIDE STREET, SUITE 500
COLUMBIA, SC 29204

STRUCTURAL ENGINEER
TOSCHKE & MCGUIRE
701 MARKET ST., #800
PHILADELPHIA, PA 19106
ME/P/E LOW VOLTAGE
ENGINEER
BR-A CONSULTING ENGINEERS
580 MARKET ST. SUITE 500
PHILADELPHIA, PA 19102
MECHANICAL ENGINEER
100 HIGHLAND AVE
CLARKS SUMMIT, PA 18811

Cooper
University Health Care
**COOPER UNIVERSITY
HOSPITAL - TOWER A**

OWNER
COOPER UNIVERSITY HEALTH-CARE
1 COOPER PLAZA
CAMDEN, NJ 08103

PROJECT MANAGER
MARRIS
270 S. GRANT STREET, SUITE 540
ARLINGTON, VA 22206

CIVIL ENGINEER / LANDSCAPE
LANGSAM
1716 MARKET STREET, SUITE 1300
PHILADELPHIA, PA 19103
SEAL & SIGNATURE

Digitally signed by L. Hanson
Date: 2024.10.15
14:14:43-04'00'



REVISION

NO.	DESCRIPTION	DATE
-----	-------------	------

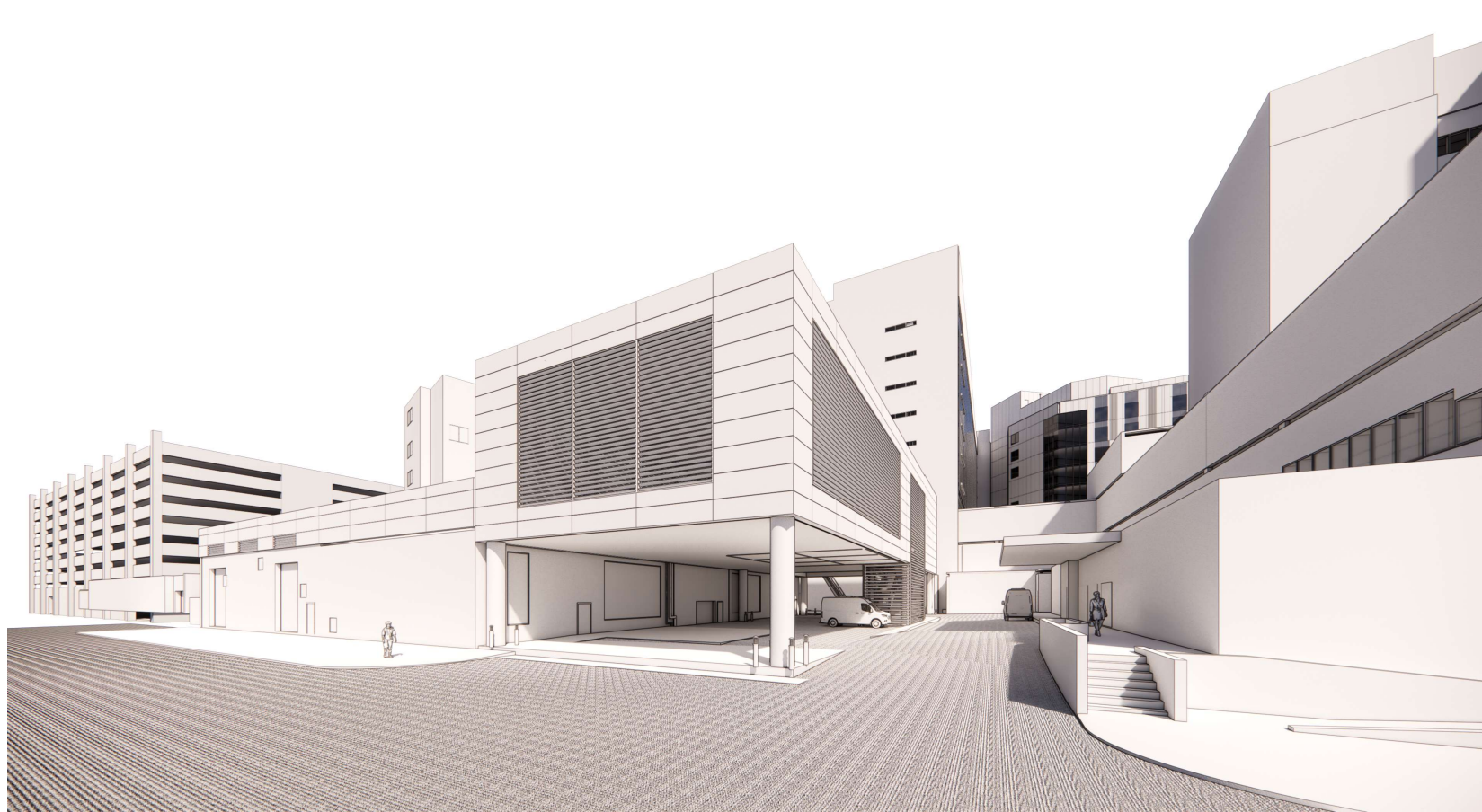
HKS PROJECT NUMBER
25695.100
DATE
10/15/2024
BSUE
CORE & SHELL PERMIT SET
PROJECT TITLE
BRIDGE ELEVATIONS

SHEET NO.
A1.350

Exhibit A Central Utility Plant Perspective

HKS

COOPER UNIVERSITY HOSPITAL (CUH) - CENTRAL UTILITY PLANT (CUP) CAMDEN, NJ



COOPER UNIVERSITY HOSPITAL

OWNER PROJECT
1 COOPER PLAZA
CAMDEN, NJ 08103

PROGRAM MANAGER

HAMMITS
2708 W. QUINCY STREET, SUITE 540
ARLINGTON, VA 22206

ARCHITECT

HKS INC.
1500 FIVE ST NW SUITE 600
WASHINGTON, DC 20005

STRUCTURAL ENGINEER

ODONNELL AND MACCARATO
720 MARKET ST #2000
PHILADELPHIA, PA 19106

MEP/FP ENGINEER

BIRLA CONSULTING ENGINEERS
2401 WILMANT ST, SUITE 700
PHILADELPHIA, PA 19102

MECHANICAL ASSOCIATES

152 HIGHLAND AVE
CLARKS SUMMIT, PA 19411

CODE CONSULTANTS

JENSEN HUGHES
111 ROCKVILLE PIKE, SUITE 500
ROCKVILLE, MD 20850

ACOUSTICAL CONSULTANTS

GERBER ASSOCIATES
1001 AVENUE OF THE AMERICANS, 4TH FL.
NEW YORK, NY 10018

WIND STUDY CONSULTANTS

HSP USA
ONE COOPER PLAZA, 250 W 54TH ST, 5TH FLR
NEW YORK, NY 10019

SCHEMATIC DESIGN

PROJECT NO. 25696_104
DATE 10/31/2024